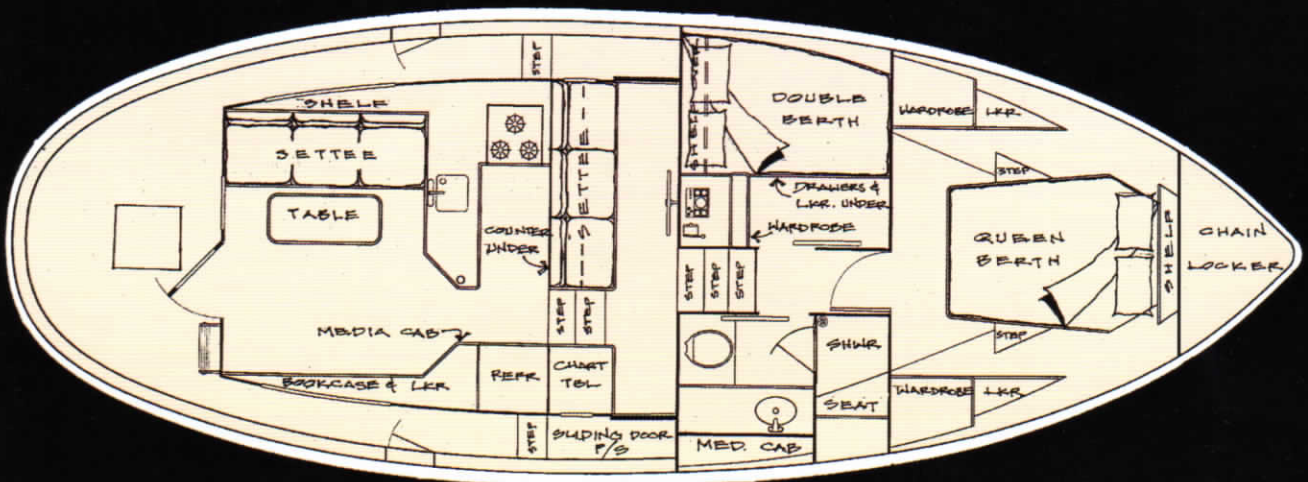


WILLARD **W** MARINE



40 PILOT HOUSE FULL DISPLACEMENT TRAWLER YACHT

Standard Equipment List

Specifications subject to change or substitution without prior notice until time of delivery.

MECHANICAL

- Diesel engine: 85hp @ 2500 RPM, 4 cylinder, naturally aspirated fresh water cooled
- Filters; fuel: dual primary and engine supplied secondary
- Propeller shaft: 1-3/4" stainless steel
- Sea cocks: bronze on all underwater thru hulls
- Steering: hydraulic
- Rudder: high density foam and fiberglass with stainless steel stock, webbs and solid, cast maganese-bronze skeg
- Bilge pumps: three automatic 12VDC in separate wells
- Water tanks: one stainless steel, 300 gal. approximately, with baffles, on deck fill and vent
- Fuel tank: 2 aluminum, 600 gal. approximate total, with baffles, on deck fill and vent
- Water heater: 11 gal. stainless, heated by engine or shore power system

ELECTRICAL

- Battery; starting: 12V in box

- Batteries; house: two, total 225 A/H, in box
- Battery charger

PILOTHOUSE

- Sole: hardwood
- Windows: aluminum frame
- Compass: 4.5"

GALLEY

- Sink: stainless steel
- Refrigerator and freezer: approximately 6.5 cu.ft.
- Range: 3 burner propane with oven
- Sole: hardwood
- Countertop: solid surface material with hardwood rails

MAIN SALOON

- Dining table: Mahogany
- Sole: hardwood
- Cabinet: media or storage
- Storage: lockers and cabinets on starboard side

HEAD

- Toilet: compact electric marine
- Waste mascerator pump
- Holding tank: 75 gal. approximately
- Sink: oval, molded into counter top

- Shower: molded fiberglass
- Countertop: solid surface material

MASTER STATEROOM

- Berth: queen, hinged with mattress, drawers and storage under
- Sole carpeted
- Lockers: cedar lined bulkheads
- Bookshelf

GUEST STATEROOM

- Berth: double with mattress, drawers and storage under
- Locker: cedar lined bulkheads
- Bookshelf
- Sole: carpeted

DECK AND EXTERIOR

- Door: aft exterior: aluminum
- Doors: pilothouse: aluminum at port and starboard
- Cleats: eight 12" stainless steel
- Anchor roller: 3" roller width
- Wash down: raw water at fore deck
- Hull gates: port and starboard
- Ports: stainless steel
- Horn: electric
- Windshield wipers: electric

Construction Notes

Hand laid, 100% solid fiberglass construction used in the hull. Vinylester resins are used in first two laminates. Fiberglass is laid up in one shift as per military specifications, which eliminates secondary bonds.

Topsides are hand-laid composed of end-grain balsa sandwich core in horizontal surfaces for heat insulation and closed-cell PVC sandwich core in vertical surfaces for high strength.

Exterior gel coat finish is impact resistant Isothalic with a nominal 25-mil thickness.

All non-skid surfaces are molded into the deck.

Water resistant polyurethane sealants are used at all joints and fittings. Approximately 20% or more of the

displacement is ballast encapsulated and sealed in the keel.

Marine grade plywood used for all structural construction. Fire resistant U.S. Coast Guard approved hose is used for fuel and steering connections with reusable flare fittings.

Engine stringers are continuous with separate, heavy duty engine mounts. The hull is divided into three watertight compartments with separate bilge pumps in sumps to maintain a dry bilge. The bow contains a water tight collision bulkhead.

Shore power connection is marine grade, shielded wiring cables, all of which meets ABYC standards. High pressure lines are Aeroquip.

Manufactured in Southern California.

LOA	40'6"	Displacement (1/2 load)	approx. 33,000 lbs	Freeboard, bow	approx. 7'-9"
Waterline.....	36'-1"	Ballast	approx 7,000 lbs	A/B ratio	approx. 2.2
Beam.....	13'-8"	Range @ cruise.....	approx. 2,800 miles	D/L Ratio	314
Draft.....	4'3"	Height, waterline to top of pilothouse	approx. 10'-5"	Fuel capacity.....	approx. 600 gals



**PACIFIC NORTHWEST
PASSAGE MAKER YACHTS**
1115 N. Northlake Way, Suite 300
Seattle, WA 98103 U.S.A.
Ph: 206-675-9975 • Fax: 206-675-9392
pmy@uswest.net

Founded 1957
1250 N.Grove Street
Anaheim, CA 92806 U.S.A.
Ph: 714-666-2150 x 211 • Fax: 714-632-8136
trawlers@willardmarine.com

**EAST COAST
ZIMMERMAN YACHT SALES**
HC 75, Box 9602
Cardinal, VA 23025 U.S.A.
Ph: 800-397-3442 • Fax: 804-725-7904
willard@zimmermanmarine.com