

BRIGHT



STAR IN YOUR BOATING FUTURE

Vega 36

DIESEL OFFSHORE YACHT
for blue-water adventuring

Molded fiberglass . . .
Turns WORK HOURS into
PLEASURE BOATING HOURS!



- 2000 MILE RANGE for extended offshore cruising!
- COMPLETE COMFORT for snug week-ending and vacationing!
- A YEAR-ROUND BEACH HOME when tied in your slip!



EASY LIVING AT THE DOCK. VEGA's delightful cockpit offers unsurpassed entertainment facilities with its sun-protected spaciousness plus the comfort of its huge, cushioned lounge seat. Abundant deck areas are provided for sun tanning or just loafing.

VEGA IS TOTALLY NEW IN CONCEPT. The galley in main cabin emancipates the "first mate" by including her in life aboard even during duty time. Lightness, airiness and convenience of home is emphasized throughout. Spacious quarters provide living and sleeping areas for 6 with unmatched comfort.

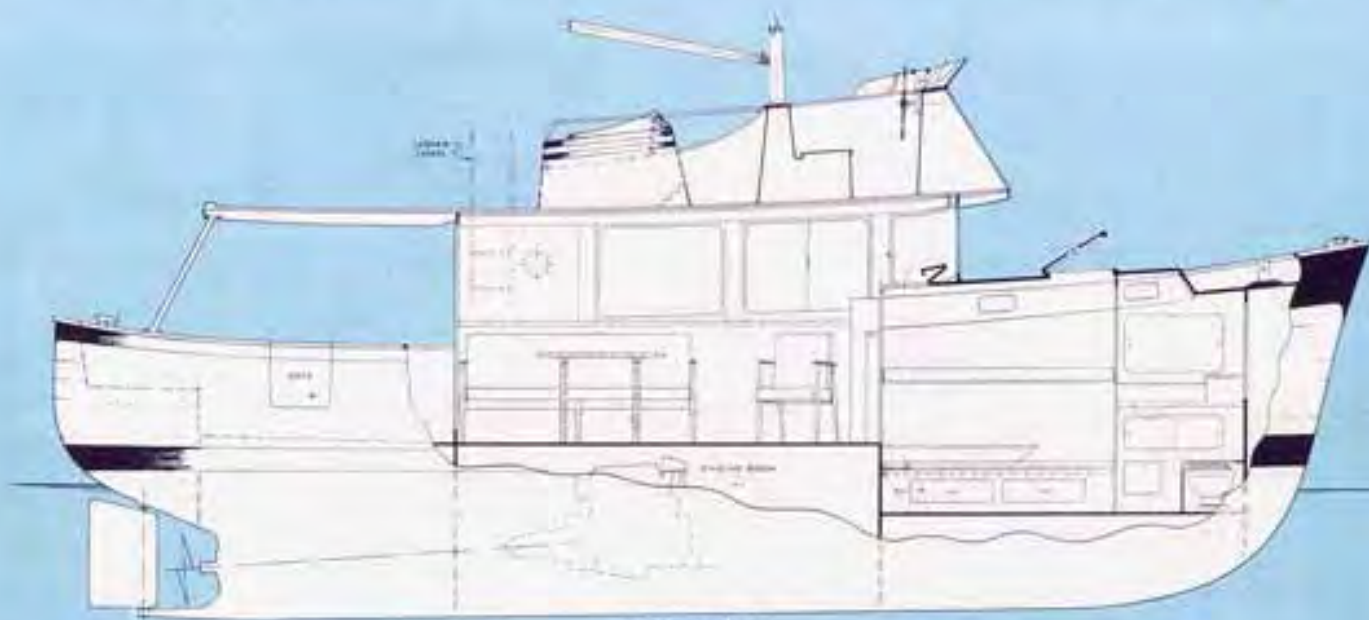


Vega 36

36' L.O.A.
33' L.W.L.
11' 9" BEAM

3' 9" DRAFT
10 TONS DISPLACEMENT
6' 4" MINIMUM HEADROOM

INBOARD PROFILE & STANDARD ARRANGEMENT PLAN



3/16" SCALE



Willard Marine
Builders of the VEGA 36 DIESEL YACHT
and the VEGA 36 MOTOR SAILER
WILLARD BOAT WORKS
VEGA MARINE CORPORATION
1295 BAKER STREET
COSTA MESA, CALIFORNIA
(714) 546-5522
714-666-2150



1306 LOGAN AVENUE • COSTA MESA, CALIFORNIA

The new VEGA gives you the proven qualities of traditional trawler design yet provides the advantages of latest technology in molded fiberglass construction. Here is a little ship with the roominess and comfort of a much larger vessel—equally at home on extended cruises to unknown waters, lying at ease in a secluded cove or safely tied in your anchorage slip!

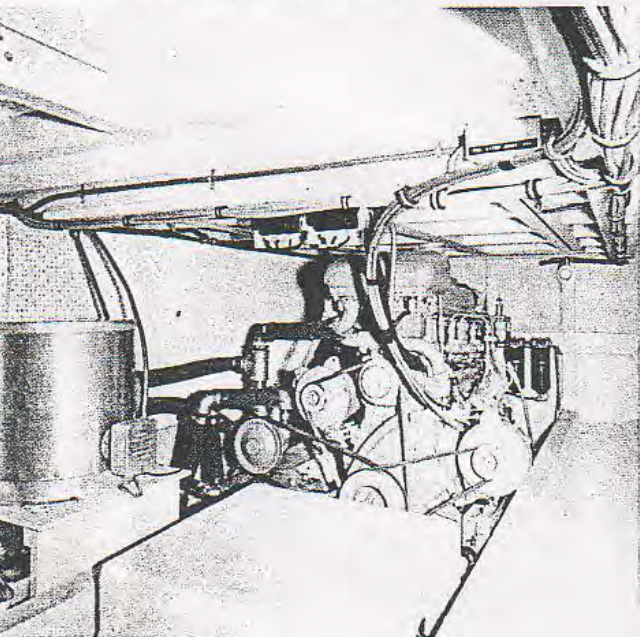
VEGA construction is based on the monocoque hull—made in a single unit without joints or seams and free from leakage. Molded fiberglass offers virtually unlimited life expectancy with an absolute minimum of maintenance. Quality of detail is emphasized throughout, from the molded-in plank lines to the warmth and richness of mahogany trim and fine cabinetry.



the HORIZON is unlimited in your Vega 30

Designed by William Garden, the VEGA is thoroughly performance proven with thousands of miles logged by owners during extended off-shore cruises. A quiet, comfortable cruising speed of an honest 8 knots; minimum fuel consumption and a cruising range up to 2000 miles. The steadying sail further provides both comfort and safety during a heavy sea voyage. The husky mast and boom can be used to lower a dinghy from the boat deck.

SO DRY YOU DUST INSTEAD OF PUMP! Placed low in the bilge, the Graymarine 70 hp, 4 cylinder, 4 cycle diesel engine can run continuously at full load for days or weeks on end. Diesel offers the most dependable, economical power afloat with complete safety. Engine room is sound insulated.



PRINCIPAL DIMENSIONS

Length, Over All 36 feet.
 Length, Water Line 33 feet.
 Beam 11 feet, 9 inches.
 Draft 3 feet, 9 inches.
 Displacement 22000 pounds, approximately.
 Headroom 6 feet, 4 inches, average.
 Freeboard - Bow 7 feet.
 Freeboard - Stern 4 feet, 6 inches.

HULL CONSTRUCTION

Hull One Piece Molded Fiberglass.
 Thickness Up to 3/4", 7 to 17 Laminates.
 Bulkheads (4) 3/4" D. F. Plywood, Bonded to Hull with Shut-off Valves on each Bulkhead.
 Ballast 6000 pounds, Lead and Cement.
 Colors Gel-coat Colors Molded-in, Simulated Plank Lines and Cove Stripes Molded-in.

DECKS AND SUPERSTRUCTURE

Decks Molded Fiberglass, Color and Non-skid Molded-in.
 Bulkheads Molded Fiberglass, Color Molded-in.
 Cabin Sides Molded Fiberglass, Color Molded-in.
 Fly Bridge Molded Fiberglass, Color and Non-skid Molded-in.
 Rail Caps Genuine Honduras Mahogany.
 Windows 1/4" Safety Sheet; Venturi and Curved Windows Plexiglass.
 Portlights (4) Forward 5" x 12"; (2) Main Cabin 8".
 Scuppers (2) End of Forward Deck; (2) Cockpit Deck.
 Hatches (1) Trunk Cabin; (1) Cockpit sole; (1) Cockpit seat.

FORWARD STATEROOM

Forepeak Collision Bulkhead and Chain Locker Storage.
 Berths (2) or (4) V-type 6' 6" Length, 4" Foam Cushions, Plastic Covered.
 Lockers (1) Full Height and Depth Hanging Locker, (4) Lockers under Berths; (1) Medicine Locker and (1) Clothes Hamper in Head.
 Head Marine Toilet; Stainless Steel Wash Basin; Formica-top Counter; Mirror; Soap Dish, Towel Holder, Paper Holder and Clothes Hook.
 Floor Carpeted, Loma-Loom, Wool and Nylon, Rubber Backed.
 Decor Bulkheads Covered with Washable Vinyl. Trim in Honduras Mahogany. Stained and Varnished.

GALLEY & MAIN SALON

Galley Top Formica Top and Back Splash; Lee Rail Edging.
 Stove Hiller 3-Burner, Oven Model, with Chrome Sea Rails. (2) Gallon Alcohol Tank with Pressure Gauge and Pump.
 Refrigerator Electric (12 volt), 4.5 Cu. Ft. with Two Freezer Trays.
 Table Formica Top; Lee Rail Edging with Drop-leaf.
 Storage (7) Cabinet Lockers, (5) Sliding Drawers - Galley Area; (1) Sliding Drawer, (3) Bins - Under Settee; (1) Hanging Locker.
 Book Case Honduras Mahogany, (4) Shelves.
 Settee Convertible L-Shaped Settee, 4" Foam Cushions and Back Rest, Plastic Covered. Converts into Double Bed.
 Floor Carpeted, Loma-Loom, Wool and Nylon, Rubber Backed.
 Overhead Vinyl Headliner, Washable, Off-white.
 Curtains Draw Curtains, Color-fast and Fade-proof cotton, Off-white.

COCKPIT AREA

Hull Door Starboard Side, Hinged and Removable, Double Safety Locked.
 Stern Seats Over 7-foot, Semi-circular Lounge Seat, with Access Hatch to Steering Gear and Rudder Post.
 Storage Large Storage Compartment under Cockpit Deck; Additional Storage under Midship Sidedecks, Port and Starboard; Weather-tight Hatch and Doors to Storage Areas.
 Overhead Vinyl Headliner, Washable, Off-white.
 Cushions (3) 3" Foam Seat Cushions, Plastic Covered.

FLYBRIDGE AREA

Windscreen Venturi-type, Special Plexiglass, Clear.
 Storage Under Full-width Hinged Seat; Entire Flybridge Skirt is Hollow and Accessible by Locker Door.
 Cleats (4) 5 1/2" Chrome Cleats (Sheeting Boom).
 Receptacle Watertight 12V Receptacle (for Compass Light).
 Stack Hinged Lid Provides Access to False Stack for Additional Storage.

RIGGING & GROUND TACKLE

Bitt Combination Mooring Bitt and Rope Plate, Perko Size 3 Chrome.
 Anchor 22 pound Danforth Galvanized, Working Use.
 Ground Tackle 150' 5/8" Nylon, 15' Galvanized Chain.
 Mooring (2) 30' Lengths and (2) 20' Lengths 5/8" Nylon.
 Fenders (2) Heavy Duty Plastic Fenders, with 8' Lines.
 Cleats (4) 8" Chrome, (4) 6" Chrome (Main Rail).
 Mast Mast and Boom: Spruce, Painted; Bronze Gooseneck, Mast Band and Boom Band; Micro-metal Track;

PROPULSION & ENGINE ROOM

Engine Perkins 4-236 Diesel, 4-Cylinder 4-Cycle, 85 EHP, Rubber Mounts.
 Transmission Warner Hydraulic Velvet Drive, 3 to 1 Reduction.
 Cooling Fresh Water Heat Exchanger, Inboard.
 Filters Fram Dual Unit, with Water Separator and Secondary Fuel Filter, Engine Mounted Final Filter. Cartridge-type Lub Oil Filter.
 Fuel Tanks Diesel No. 1 or No. 2 (No. 2 Preferred). (2) 250 Gal. each, 12 Gal. Steel Tanks, Baffled and Coated, Shut-off's at Tanks, Vented Overboard, Deck Filled, Special Drain Plugs.
 Shaft Monel, 1 1/2" Diameter, Double Nuted.
 Propeller Bronze, 5 Blade, L.H. 24" x 22".
 Bearing Stuffing Box and Cutless Rubber Stern Bearing.
 Exhaust Oversized (2"), 6 foot, Water Jacketed. Rubber Silencer, Wet Type.
 Alarm Automatic Alarm, Hi-temperature and Lo-oil Pressure.
 Ventilation (2) Natural Intake F/S.
 Insulation Special Fire-retardant Acoustical Tile. Sound Deadening.
 Hatches (2) Hatches to Engine Room: Forward and over Engine.

STEERING & CONTROLS

Wheel Single Flybridge 24" Bronze Chrome-plated Wheel.
 System Wagner Model T-Z, Self Contained Hydraulic Pump and Ram.
 Rudder Tobin Bronze Shaft 1 1/2" Diameter; Mahogany Blade with 1/2" Thru-pins; Shaft End Squared and Keyed for Auto-Pilot.
 Skeg VEGA Casting, Bronze, Cutless Bearing for Rudder Shaft.
 Controls Morse Model Twin S, Throttle and Clutch.
 Instruments Stewart-Warner; Tachometer, Oil Pressure, Water Temperature, and Ammeter; Start, Stop and Horn Buttons, and Key Ignition Switch.

BILGE SYSTEM

Sump Well Fwd End of Engine Room. All Bilges Drain to Sump.
 Valves 3/4" Gate Valves on Each Bulkhead.
 Pumps Par Model 5600 Electric Bilge Pump, and Par Model 3965 2 1/2" Navy-type Hand Pump.
 Oil Pan Bilge under Engine Piped Directly to Sump.

SALT WATER SYSTEM

Piping Copper or Neoprene Hose with S/S Clamps.
 Sea Valves Bronze Thru-hulls with Shut-off Valve on All Below-waterline Openings.
 Strainer Engine Intake, Groco 3/4" Bronze-monel Strainer.

FRESH WATER SYSTEM

Tanks (2) 100 Gal. each, Fiberglass Tanks, Baffled, Separate Shut-off's, Vented Overboard, Deck Filled.
 Piping Copper and Neoprene Hose with S/S Clamps.
 Faucets Galley, Forward Head and Shower; Hot and Cold, Chromed Brass.
 Water Heater Raritan 8 Gal, Engine Heat or Dockside 110 Vac.
 Pressure Hot and Cold Automatic Electric Pressure System, 12 Volt, Par Model 5800.
 Wash Basin 12" Oval Stainless Steel.
 Galley Sink 15" x 24" Stainless Steel, Double Bowl.
 Shower Hot and Cold, Located in Cockpit Area.

DUAL ELECTRICAL SYSTEM

Batteries (2) Two H. D. 12 Volt, 200 Ampere Hour Each, Marine Batteries; Acid-proof Fiberglass Box.
 Panel Custom Master Switch Panel, Battery Selector and Disconnect Switch. Switches are all Circuit-breaker Type.
 Wiring All Approved Marine-type; Meets Fire Underwriter's Code.
 Charging Engine: (2) 40 Amp. Alternators with Regulators. Dockside: 20 Amp. Automatic 110 Vac Battery Charger.
 Outlets (3) Convenience Outlets for 110 Vac; Shore Plug Receptacle.
 Shore Cord (1) 50' Neoprene Extension Cord, Marine Connector Plugs.
 Fixtures (3) Fwd Stateroom; (1) Head; (4) Main Salon; (1) Aft Cockpit.
 Radio Ground Copper Strip, Around and Molded-in Entire Perimeter of Hull.

SAFETY & NAVIGATION

Navigation Lights to Class II International Requirements.
 Whistle Electric Horn, 12 Volt, Chromed.
 Bell 6", Chromed, Unmounted.
 Extinguishers (2) 2 1/2 pound Dry-chemical, U.S.C.G. Approved
 Jackets (6) Adult Size, U.S.C.G. Approved Life Jackets.
 Rails Chromed Hand Rails; Flybridge Skirt P/S, and Flybridge Car P/S.

All specifications and equipment are subject to change without notice.

WILLARD BOAT WORKS

1295 Baker Street

Costa Mesa

California

(714) 546-5522

WBW - V36C - P4
October 1, 1966

VEGA 36 CUSTOM CRUISER

PRICE AND OPTIONS

VEGA 36 Custom Cruiser, complete in accordance with specification sheet WBW - V36C - S2, effective April 15, 1965, F. O. B. Factory, Costa Mesa, California \$ 38,500.

Options Available at Time of Order:

- | | |
|--|---------|
| 1. Teak Decking - Cockpit Sole | \$ 395. |
| 2. Teak Rail Caps - Main and Flybridge Rails | 450. |
| 3. Pulpit and Life Lines | 475. |
| 4. Bow Roller, Electric Windlass, Anchor, 275' Chain | 750. |
| 5. Dinghy Chocks and Hoisting Gear | 195. |
| 6. Lower Steering and Control Console | 575. |
| 7. Cockpit Curtains, Dacron | 285. |
| 8. Perkins 6-354, 6 cyl, 130 BHP Engine; 2.5-1 Red. | 850. |

Note: Individual custom interior layouts and special equipment available. Above optional equipment deletes appropriate standard items and reflects net prices.

SHIPPING AND LAUNCHING:

- | | |
|--|--------|
| 1. Trucking, Launching and Commissioning, Newport Harbor | 300. |
| 2. Rail Shipment and Cradle | (O.A.) |

PAYMENT SCHEDULE:

\$5,000. deposit with order, three \$8,000. progress payments, and balance due upon completion. Options ordered payable with first progress payment. Sales Tax, shipping, and launching fees payable with completion payment.

F. O. B. Prices and Specifications Subject to Change Without Notice.