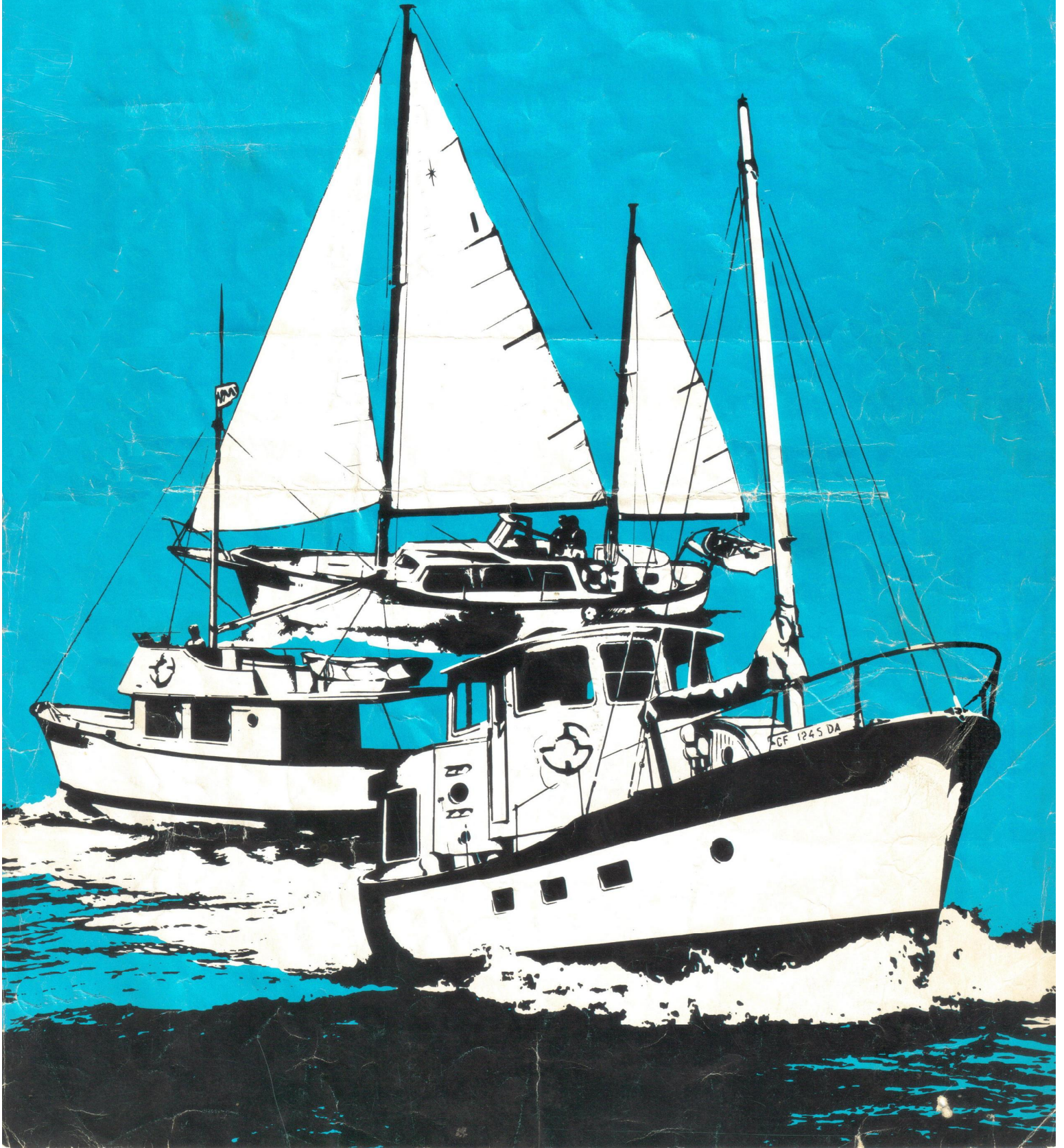


THE VEGA 36 SERIES



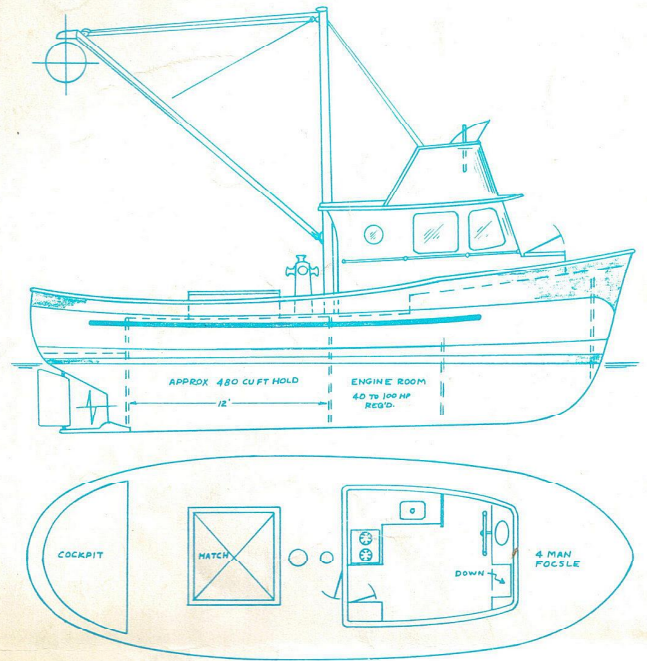
THE VEGA 36 SERIES

The VEGA gives you the proven qualities of traditional trawler design yet provides the advantages of latest technology in molded fiberglass construction. Here is a little ship with the roominess and comfort of a much larger vessel — equally at home on extended cruises to unknown waters, lying at ease in a secluded cove or safely tied in your anchorage slip.

VEGA construction of molded fiberglass offers virtually unlimited life expectancy with an absolute minimum of maintenance. Quality of detail is emphasized throughout, from the molded-in plank lines to the warmth and richness of mahogany trim and fine cabinetry. The beauty of custom workmanship and individual features are possible as each VEGA is built to order only.

Designed by William Garden, the VEGA is thoroughly performance proven with thousands of miles logged by owners during extended off-shore cruises. The hull is a full displacement design, giving a quiet, comfortable cruising speed of a continuous 8 knots that can be maintained for days on end; a minimum fuel consumption of approximately two gallons per hour, and a cruising range up to 2,000 miles. The steadying sail further provides both comfort and safety during a heavy sea voyage. The husky mast and boom can be used to lower a dinghy from the boat deck. The VEGA is truly a classic of design and detail.

VEGA 36 COMMERCIAL



The basic VEGA 36 hull is available completed to any phase for pleasure or commercial use. Illustrated is one commercial design of many which can be built on this versatile hull.

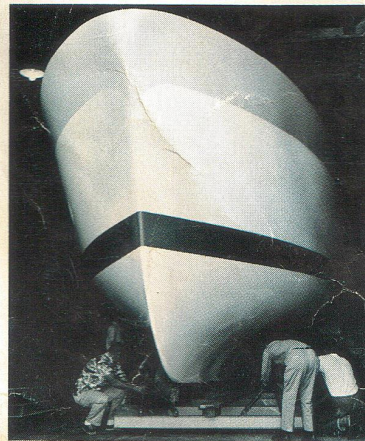
The design of the VEGA is actually based on the commercial fishing trawler, where the new trend for offshore yachts began. Commercial fishermen require a rugged vessel, capable of operation in adverse sea conditions for extended periods of time — also required by the cruising man.

VEGA HULL SPECIFICATIONS:

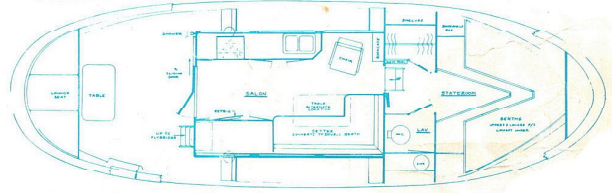
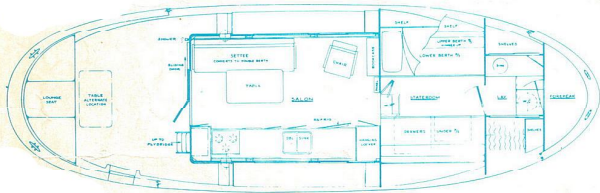
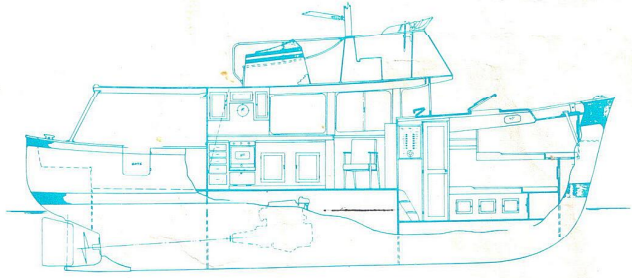
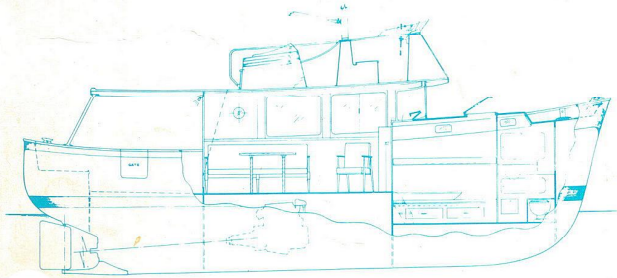
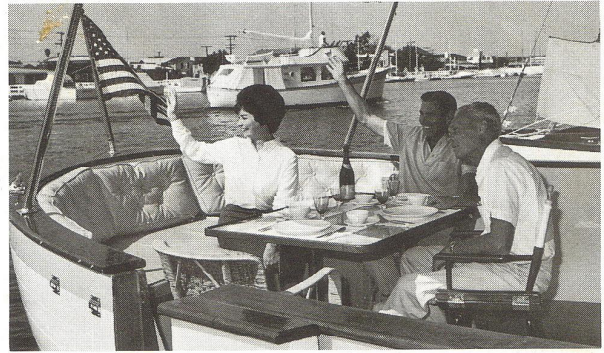
36' L.O.A. 11'9" Beam
33' L.W.L. 3'9" Draft

Hull Construction:
hand laminated, 8 laminates at shear to
15 laminates at keel.

Hull Design:
full displacement, double-ended.

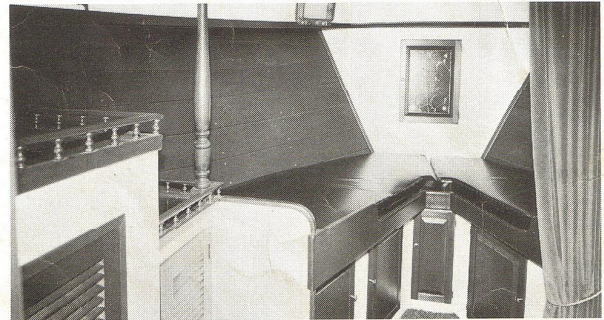


**VEGA 36
CUSTOM
CRUISER**

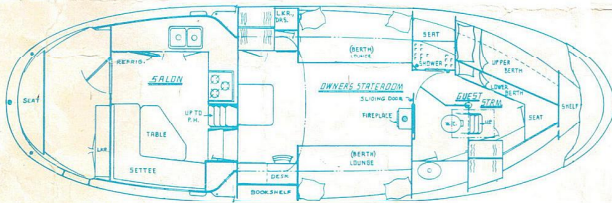
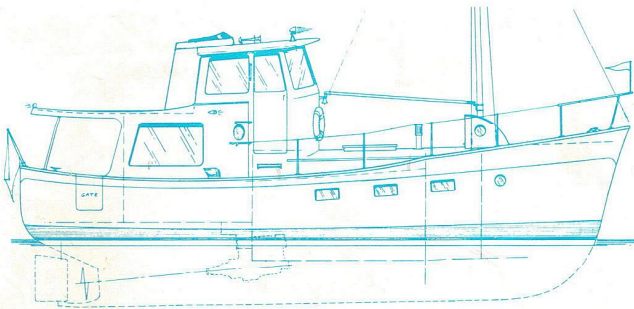


The VEGA Custom Cruiser is ideal for the cruising couple — for living aboard comfortably for an extended period of time. Lightness, airiness and convenience of home is emphasized throughout. The large galley-saloon opening onto the huge protected after cockpit provides for an open living concept and for entertaining. Range is 2000 miles; water capacity

200 gallons. Finely equipped and ready for sea. The two suggested Custom Cruiser layouts illustrated have proven most popular. Since the VEGA is designed to appeal to experienced yachtsmen who have their own needs firmly in mind, the interior can be custom arranged to satisfy your cruising requirements. Each VEGA is actually built to order only.



VEGA 36 TRAWLER



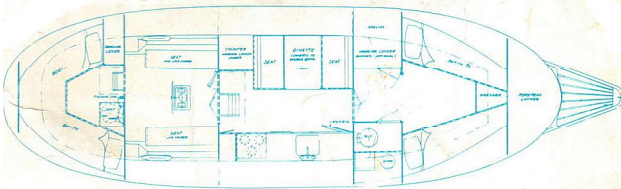
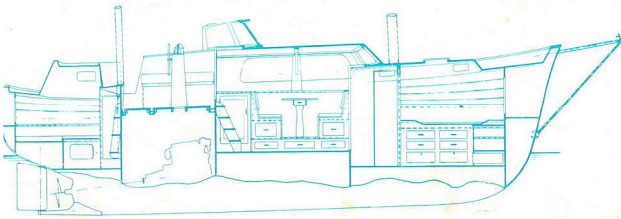
The VEGA Trawler is probably the roomiest 36 footer afloat with a total of four separate inside cabins plus large head and full sized shower. This allows private cruising accommodations for two couples, and an additional large berth in the large wheelhouse. The owner's stateroom amidships doubles as an entertainment lounge with spacious living area, fireplace,



desk and bookshelf. And the lounge seats are both actually double berth size. The primary consideration being offshore cruising, an enclosed wheelhouse is provided to give all weather protection and full visibility. The Trawler arrangement and profile, based on the husky VEGA hull of William Garden, is a design by Blaine Seeley.



**VEGA 36
MOTOR
SAILER**



A true Motor Sailer designed to meet the requirements of yachtsmen for extended offshore voyages. A husky 12.5 ton displacement. 660 sq. ft. working sail area and over 1200 mile diesel power range at 8 knots. Below-deck areas are spacious and airy with real liveability for six in three cabins. The separate after cabin is amazingly roomy, with its own head and basin.

An outstanding design feature is the well protected topside command station which affords full visibility, spacious seating and lounging accommodations, and single-handed sailing or powering controls. And full walkaround decks.

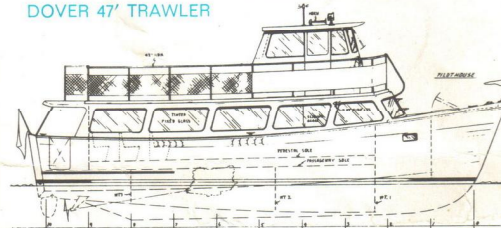


**OTHER
FIBERGLASS SERIES**

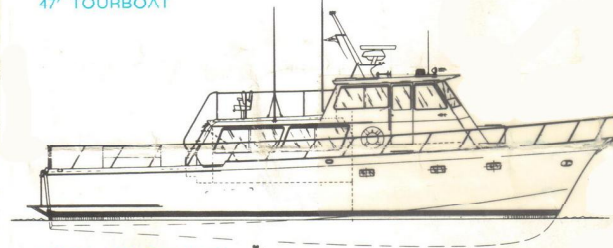
Willard Boat Works specializes in the building of large molded fiberglass boats, both custom and stock designs, for pleasure and for commercial use. Stock fiberglass hull sizes are 36', 47', 50', 59', 64', 65', and 70', which includes the well known "VEGA" series of cruising motor yachts and the "PACIFIC CLIPPER" series of ocean sportfishing and high performance yachts. Another specialty is in fiberglass tooling for other companies, as well as in marine and fiberglass consulting.



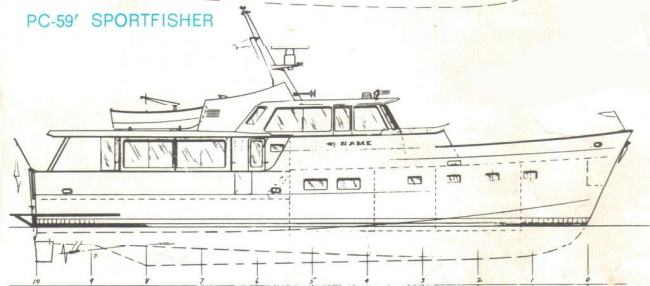
DOVER 47' TRAWLER



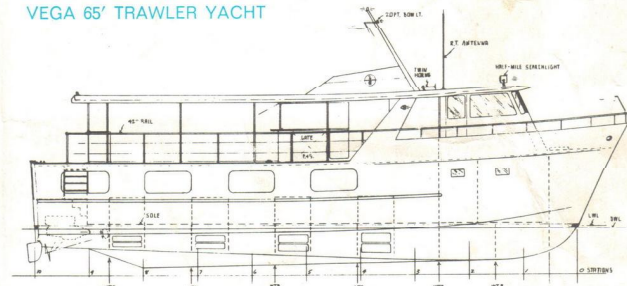
47' TOURBOAT



PC-59' SPORTFISHER



VEGA 65' TRAWLER YACHT



65' TOURBOAT

WILLARD BOAT WORKS

1295 Baker Street, Costa Mesa, California 92626, U.S.A.
(714) 546-5522